



# Network Termination Unit (NTU)

*EXETEL External Guide*

Release date: 26 October 2020





(Figure 2)

If NTU cannot be placed within reach of the demarcation, Handoff will be extended. It could be **RJ45 socket** (Figure 3) or **wires only** (Copper/Fibre – Figure4)

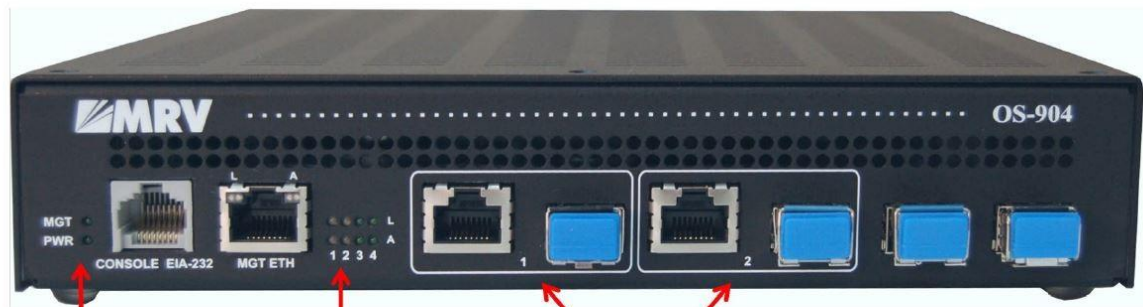


(Figure 3)



(Figure 4)

## NTU provided could be one of the following

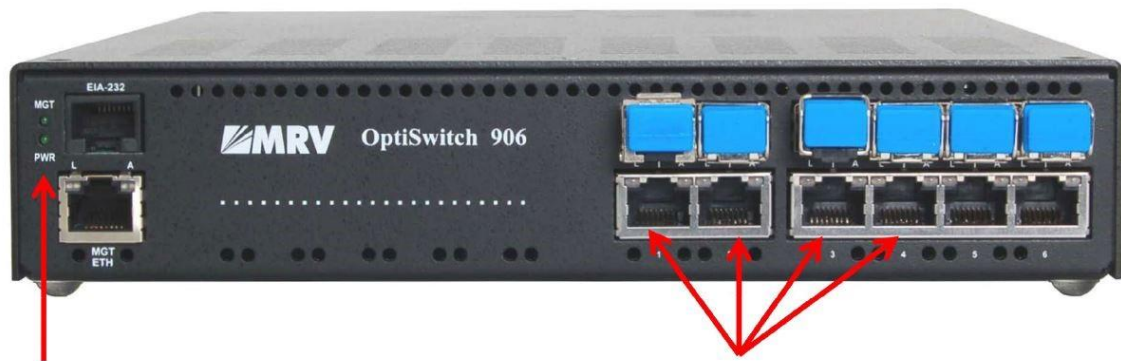


Power LED

Port Status LEDs

UNI Ports  
10/100/1000Base-T or  
100/1000Base-X SFP

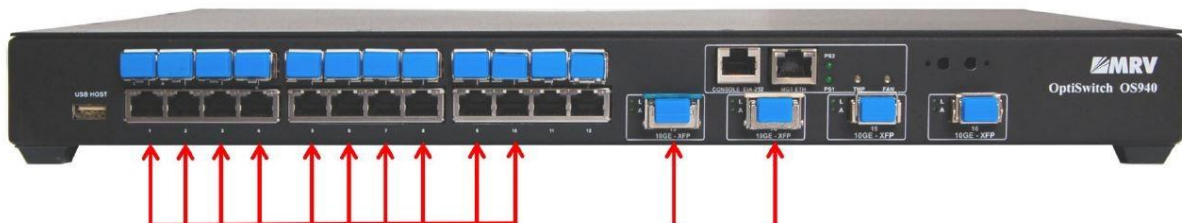
**OS904 2x UNI Fibre Based NTU**



Power LED

UNI Ports  
10/100/1000Base-T or  
100/1000Base-X SFP

**OS906 4x UNI Fibre Based NTU**



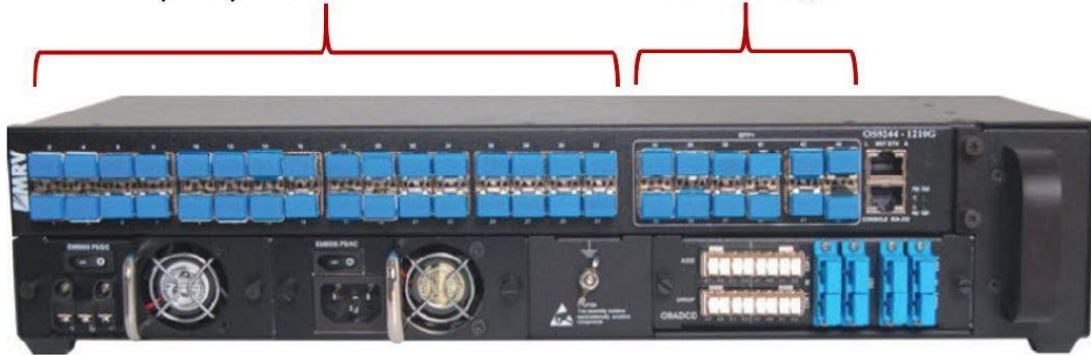
UNI Ports  
10/100/1000Base-T or  
100/1000Base-X SFP

UNI Ports  
10GE -XFP

**OS940 10GE Fibre Based NTU**

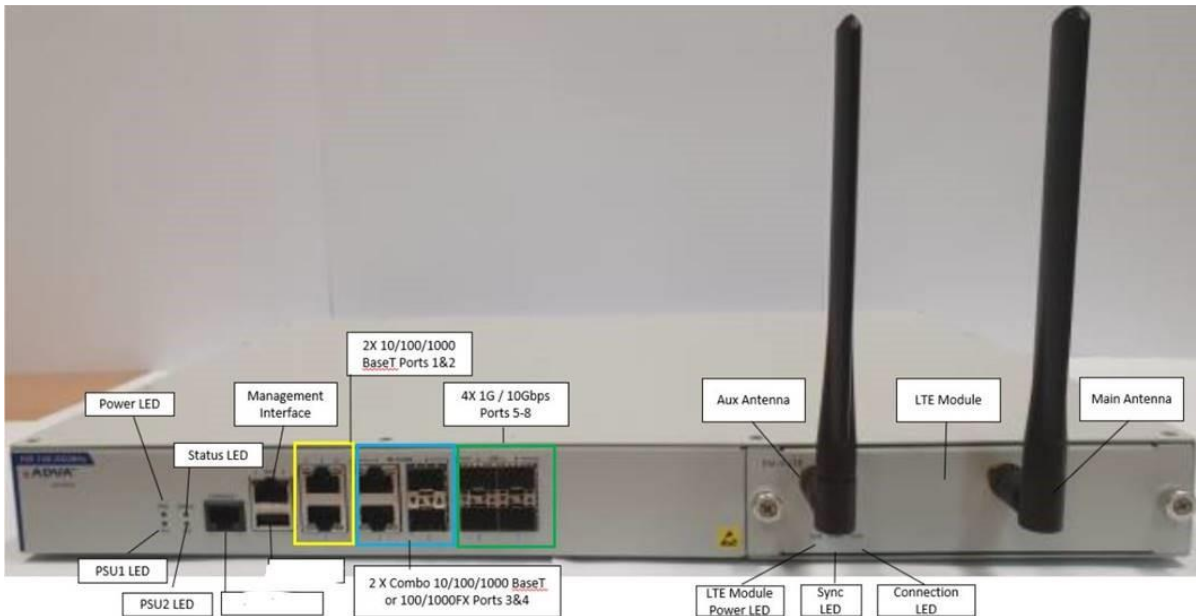
Ports 1-32 Customer-facing  
10/100/1000 SFP

Ports 33-44 Customer or  
Network facing SFP+



**OS9244 10GE Fibre Based NTU**

**For Fibre services with 4G failover, below NTU will be provided.**



**OS-V8-M NTU (LTE)**

