

TP-Link TL- WR740N/ WR741ND User Guide



- 2 of the modem
- 3 Back Panel
- 4 How to setup/connect your hardware
- 5 Quick Installation Guide

- Contents
- 1 Main Features
- The Front Panel

Main Features

- Make use of IEEE 802.11n wireless technology to provide a wireless data rate of up to 150Mbps
- One 10/100M Auto-Negotiation RJ45 WAN port, four 10/100M Auto-Negotiation RJ45 LAN ports, supporting Auto MDI/MDIX
- Provides WPA/WPA2, WPA-PSK/WPA2-PSK authentication, TKIP/AES encryption security
- Shares data and Internet access for users, supporting Dynamic IP/Static IP/PPPoE Internet access
- Supports Virtual Server, Special Application and DMZ host
- Supports UPnP, Dynamic DNS, Static Routing
- Provides Automatic-connection and Scheduled Connection on certain time to the Internet
- Connects Internet on demand and disconnects from the Internet when idle for PPPoE
- Built-in NAT and DHCP server supporting static IP address distributing
- Supports Stateful Packet Inspection
- Supports VPN Passthrough
- Supports Parental Control and Access Control
- Provides 64/128/152-bit WEP encryption security and wireless LAN ACL (Access Control List)
- Supports Flow Statistics
- Supports firmware upgrade and Web management
- Provide a switch for the power

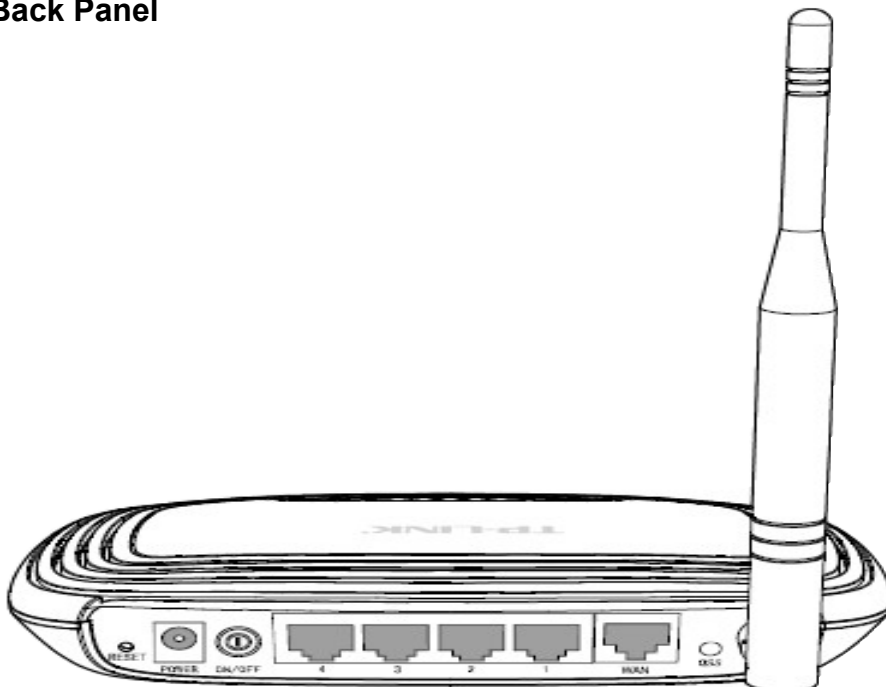
The Front Panel of the modem



Following indicates the status of the LED lights which provides you the modem's working status.

Name	Status	Indication
⏻ (Power)	Off	Power is off.
	On	Power is on.
⚙️ (System)	Flashing	The Router is working properly.
	On /Off	The Router has a system error.
📶 (WLAN)	Off	The Wireless function is disabled.
	Flashing	The Wireless function is enabled.
🌐 (WAN), 🖥️ (LAN 1-4)	Off	There is no device linked to the corresponding port.
	On	There is a device linked to the corresponding port but there is no activity.
	Flashing	There is an active device linked to the corresponding port.
🔒 (QSS)	Slow Flash	A wireless device is connecting to the network by QSS function. This process will last in the first 2 minutes.
	On	A wireless device has been successfully added to the network by QSS function.
	Quick Flash	A wireless device failed to be added to the network by QSS function.

Back Panel



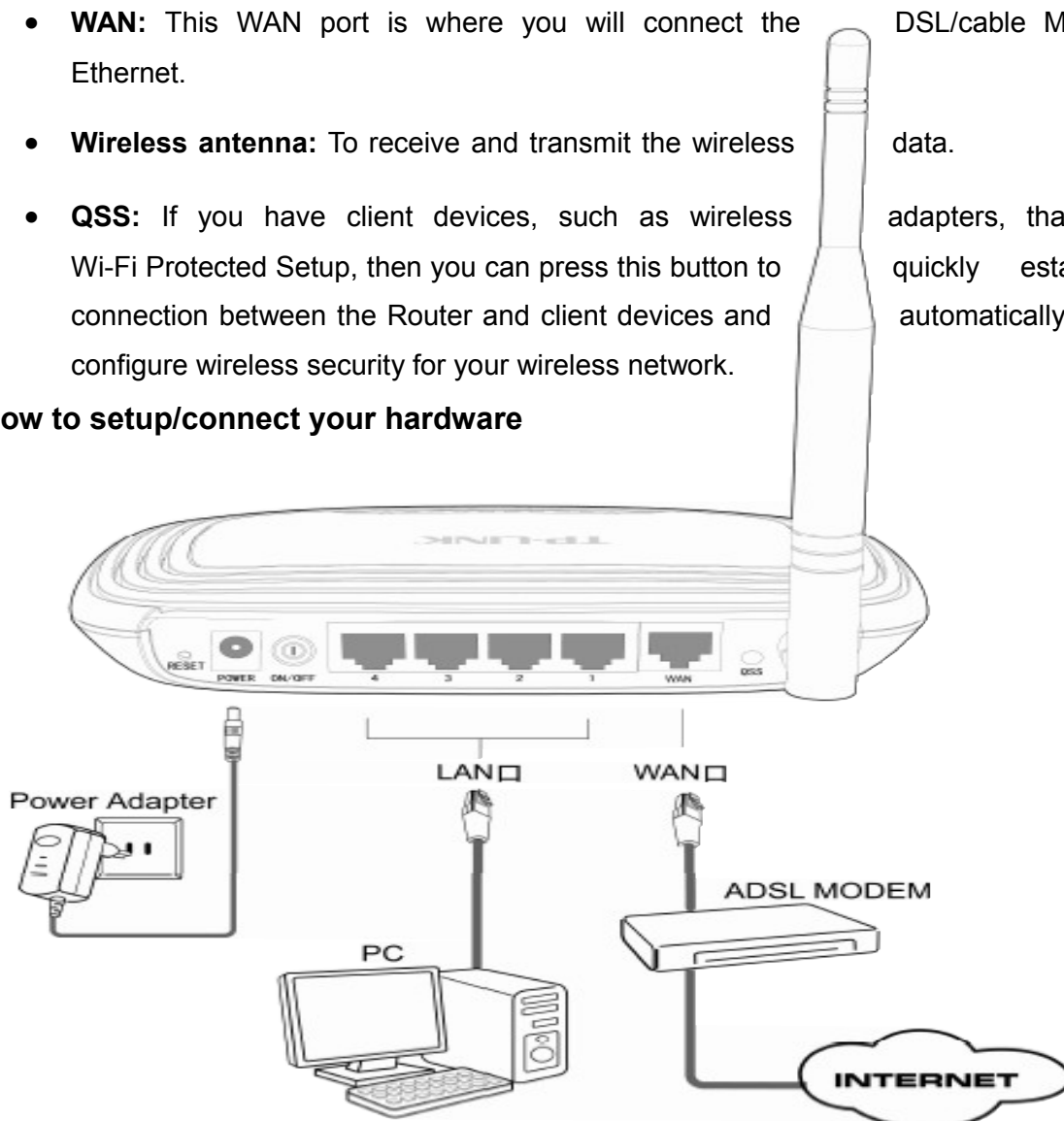
- **RESET:** There are two ways to reset to the Router's factory defaults.

1) Use the Factory Defaults function on System Tools -> Factory Defaults page in the Router's Web-based Utility.

2) Use the Factory Default Reset button: Press the Reset button for five seconds and then wait for the Router to reboot.

- **POWER:** The Power socket is where you will connect the power adapter. Please use the power adapter provided with this TL-WR740N/TL-WR741ND 150Mbps Wireless N Router.
- **ON/OFF:** The switch for the power.
- **1,2,3,4 (LAN):** These ports (1, 2, 3, 4) connect the Router to the local PC(s).
- **WAN:** This WAN port is where you will connect the DSL/cable Modem, or Ethernet.
- **Wireless antenna:** To receive and transmit the wireless data.
- **QSS:** If you have client devices, such as wireless adapters, that support Wi-Fi Protected Setup, then you can press this button to quickly establish a connection between the Router and client devices and automatically configure wireless security for your wireless network.

How to setup/connect your hardware

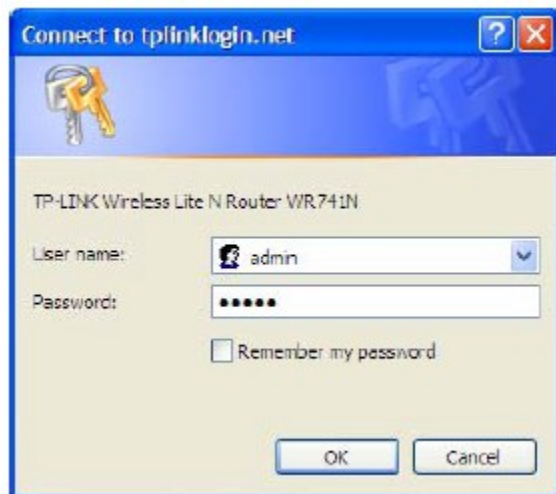


Quick Installation Guide

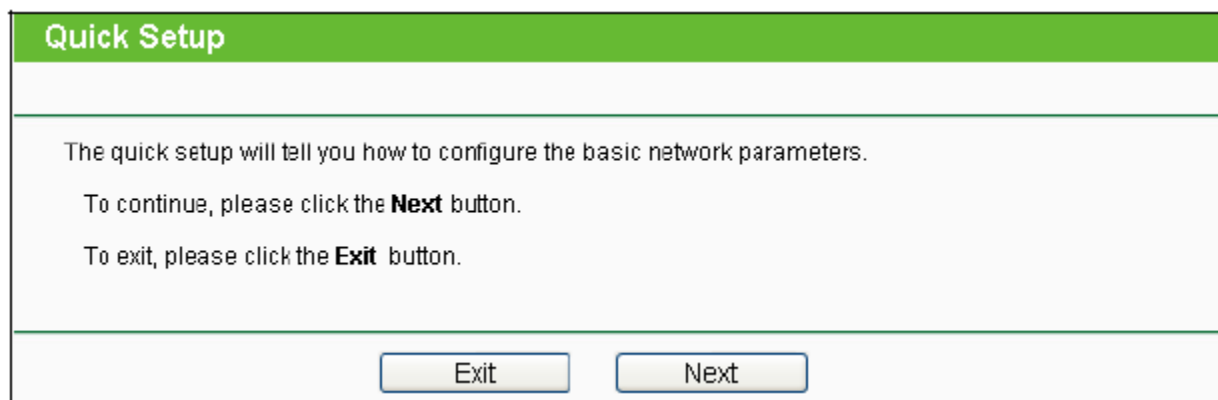
To access the web configuration utility for the router, open a web-browser and type in the default address **192.168.1.1** in the address field of the browser.

If **192.168.1.1** is not responding try **192.168.0.1**.

After sometime, you will be prompted to enter the modem User Name and Password for the modem to login. By default it is '**admin**' for both. Then click the **OK** button or press the Enter key.



1. After successfully login, you can click the **Quick Setup** to quickly configure your Router.



2. Click **Next** and then **WAN Connection Type** page will appear. Select the WAN Connection Type as **PPPoE**.

Quick Setup - WAN Connection Type

The Quick Setup is preparing to set up your connection type of WAN port.
The Router will try to detect the Internet connection type your ISP provides if you select the **Auto-Detect** option. Otherwise, you need to specify the connection type manually.

Auto-Detect - Let the Router automatically detect the connection type your ISP provides.

PPPoE - For this connection, you will need your account name and password for your ISP.

Dynamic IP - Your ISP uses a DHCP service to assign your Router an IP address when connecting to the Internet.

Static IP - This type of connection uses a permanent, fixed (static) IP address that your ISP assigned.

3. Configure the following options provided by your ISP: **Username, Password**. Then click **Next**.

Quick Setup - PPPoE

User Name:

Password:

Confirm Password:

4. If you are visiting the Router from the main computer, please select **Yes**, and then click **Clone MAC Address**.

Quick Setup - MAC Clone

Please read help carefully on the right.

Yes, I am connected by the main computer (clone MAC address)

No, I am connected by another computer (do NOT clone MAC address)

WAN MAC Address:

Your PC's MAC Address:

5. Click **Next** to continue, the **Wireless settings** page will appear. Select **Wireless Security** as **WPA-Personal/WPA2-Personal** and enter the wireless password in

password field.

Quick Setup - Wireless

Wireless Radio:

Wireless Network Name: (Also called the SSID)

Region:

Channel:

Mode:

Channel Width:

Max Tx Rate:

Wireless Security:

Disable Security

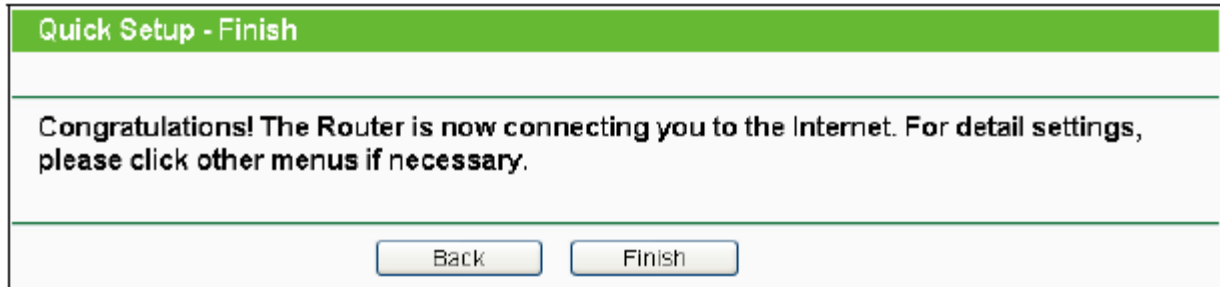
WPA-Personal/WPA2-Personal

Password:

(You can enter ASCII characters between 8 and 63 or Hexadecimal characters between 8 and 64.)

No Change

6. Click the **Next** button. You will then see the **Finish** page.



7. If there is something changed on the Wireless page, you will see the **Finish** page as shown below. Click the **Reboot** button to make your wireless configuration take effect and finish the Quick Setup.

